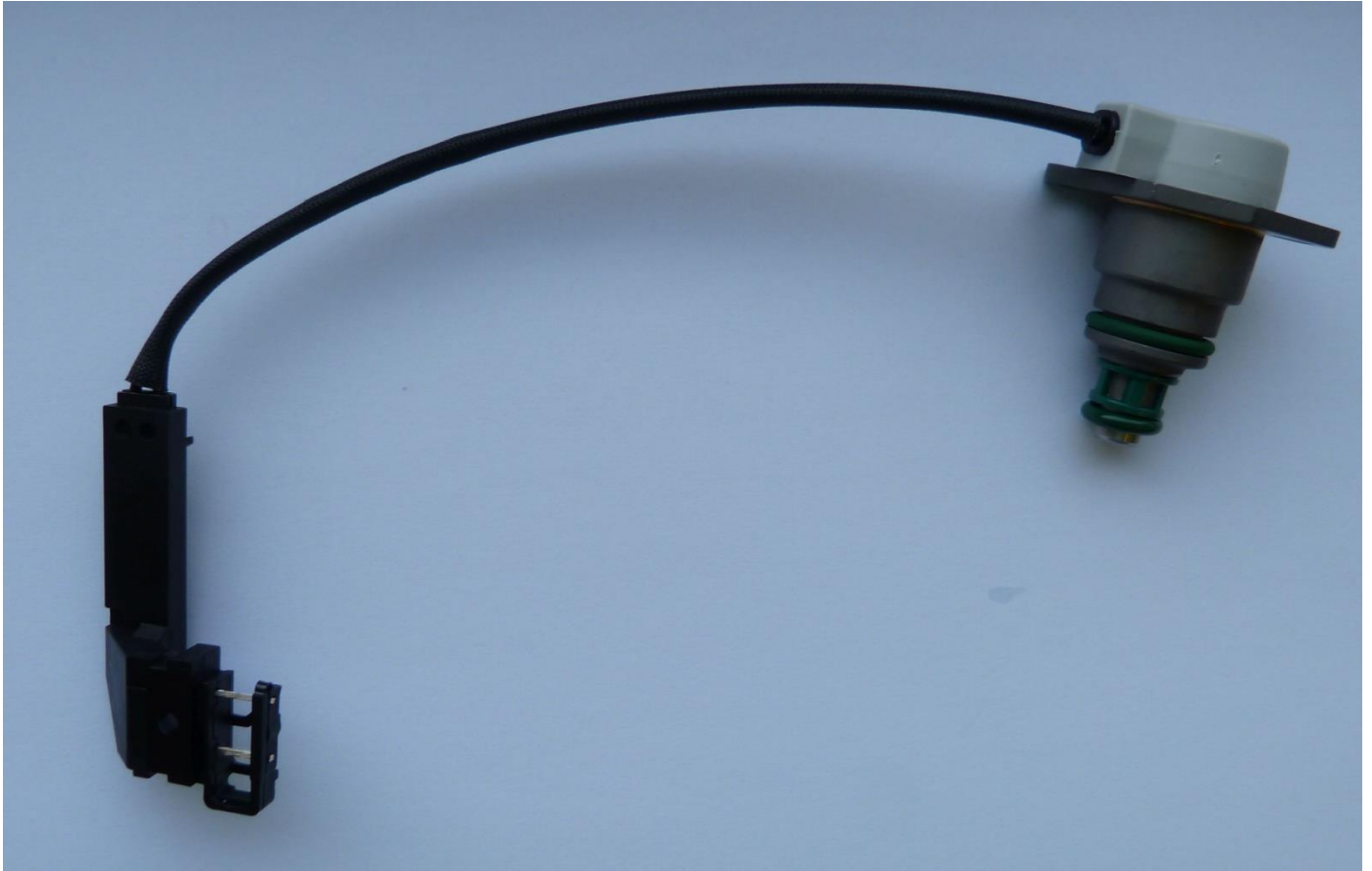


DMV10

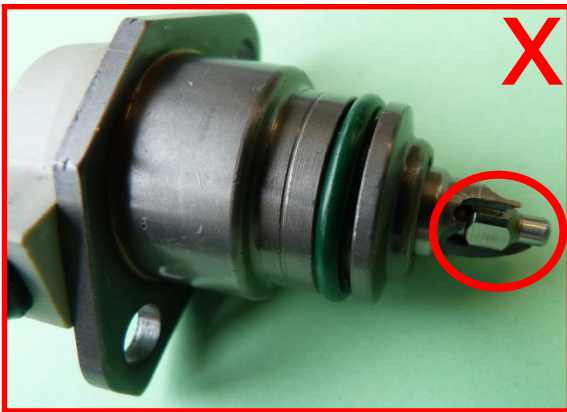


Criteria: ·

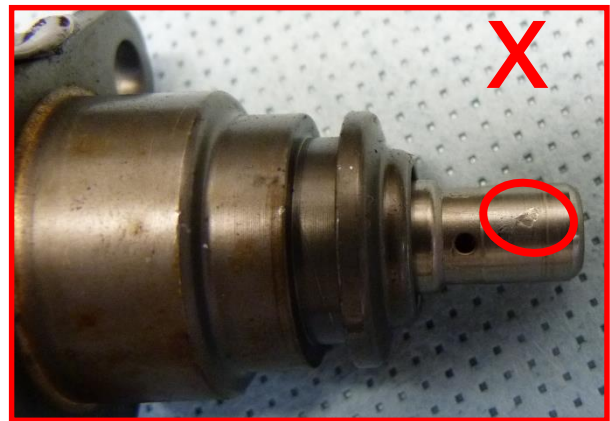
- mechanical damage
- not identifiable

red frame → not acceptable
green frame → acceptable

Criterion: mechanical damage



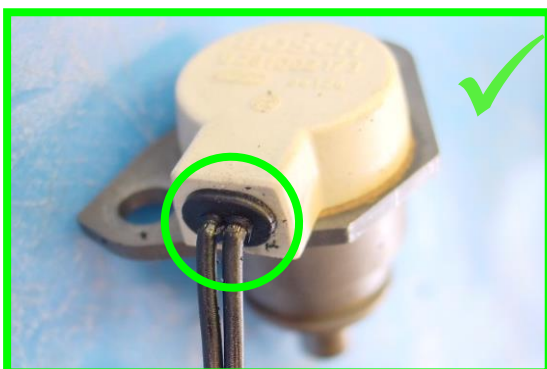
heavy damage and disruption on valve unit
→ not acceptable



slight damages on surface of valve unit
→ not acceptable



damages on front end of valve unit
→ not acceptable



cable / isolation damaged
→ acceptable



cable / isolation damaged → acceptable
corrosion on flange → acceptable