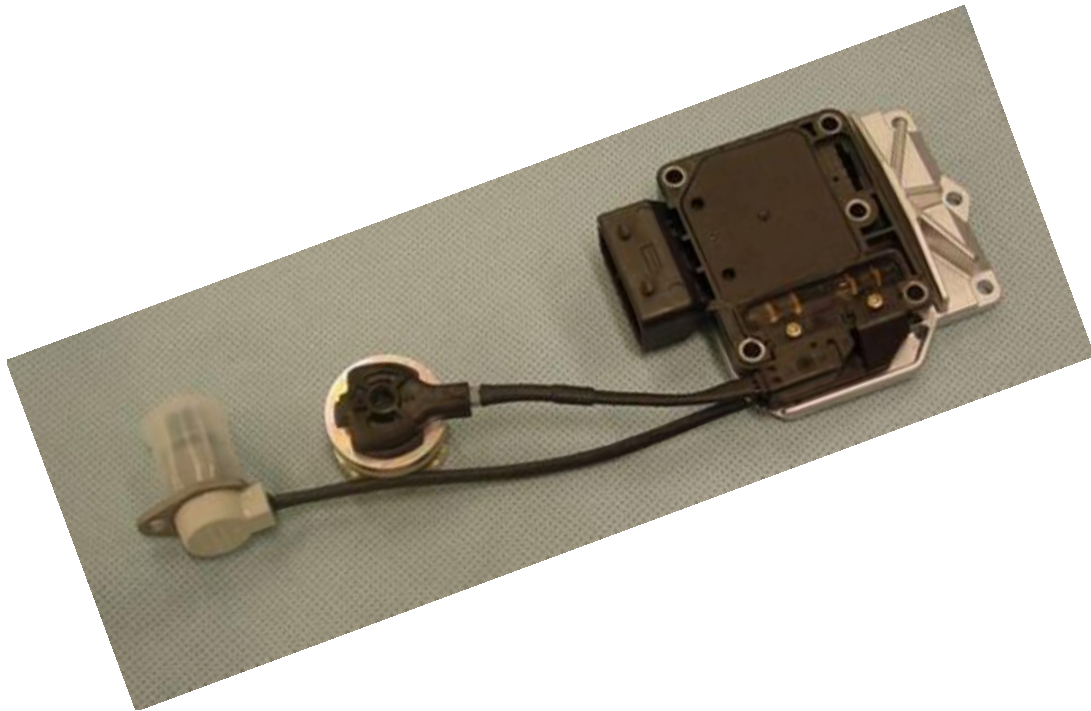


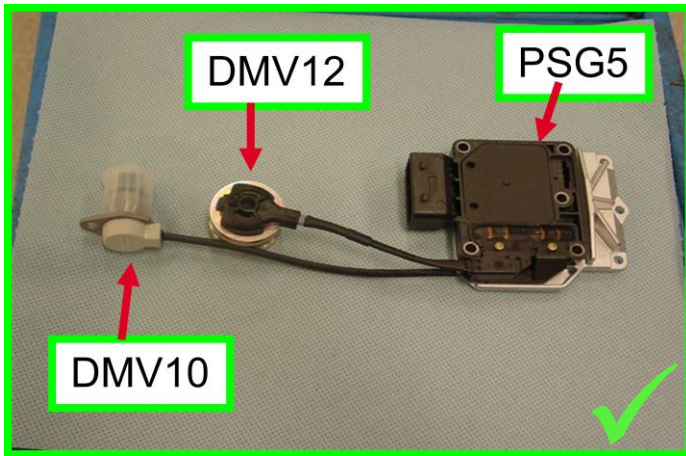
## Parts set PSG5



### Criteria:

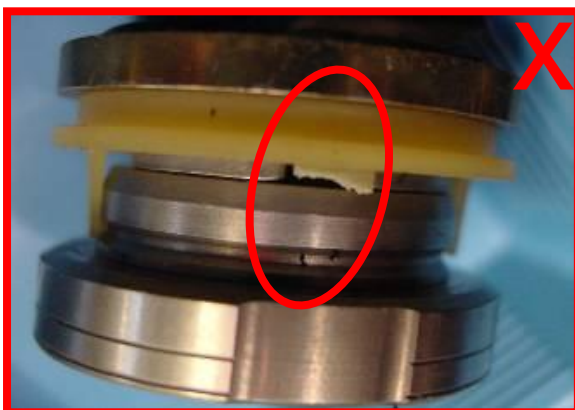
- dismantled / incomplete
- mechanical damage
- damage on cable
- not identifiable

**Criterion: dismantled / incomplete**



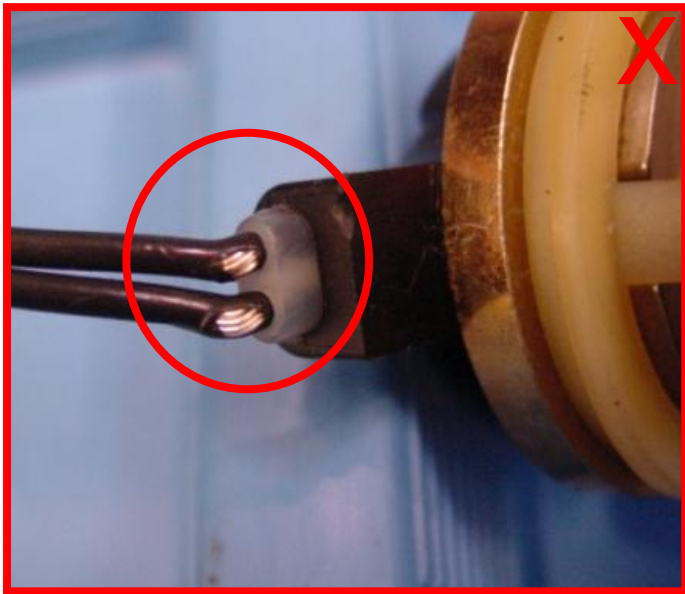
Set must be complete.

**Criterion: mechanical damage**



Upper part not firmly catching/ catching bracket broken  
→ not acceptable

### Criterion: damage on electronical plugs



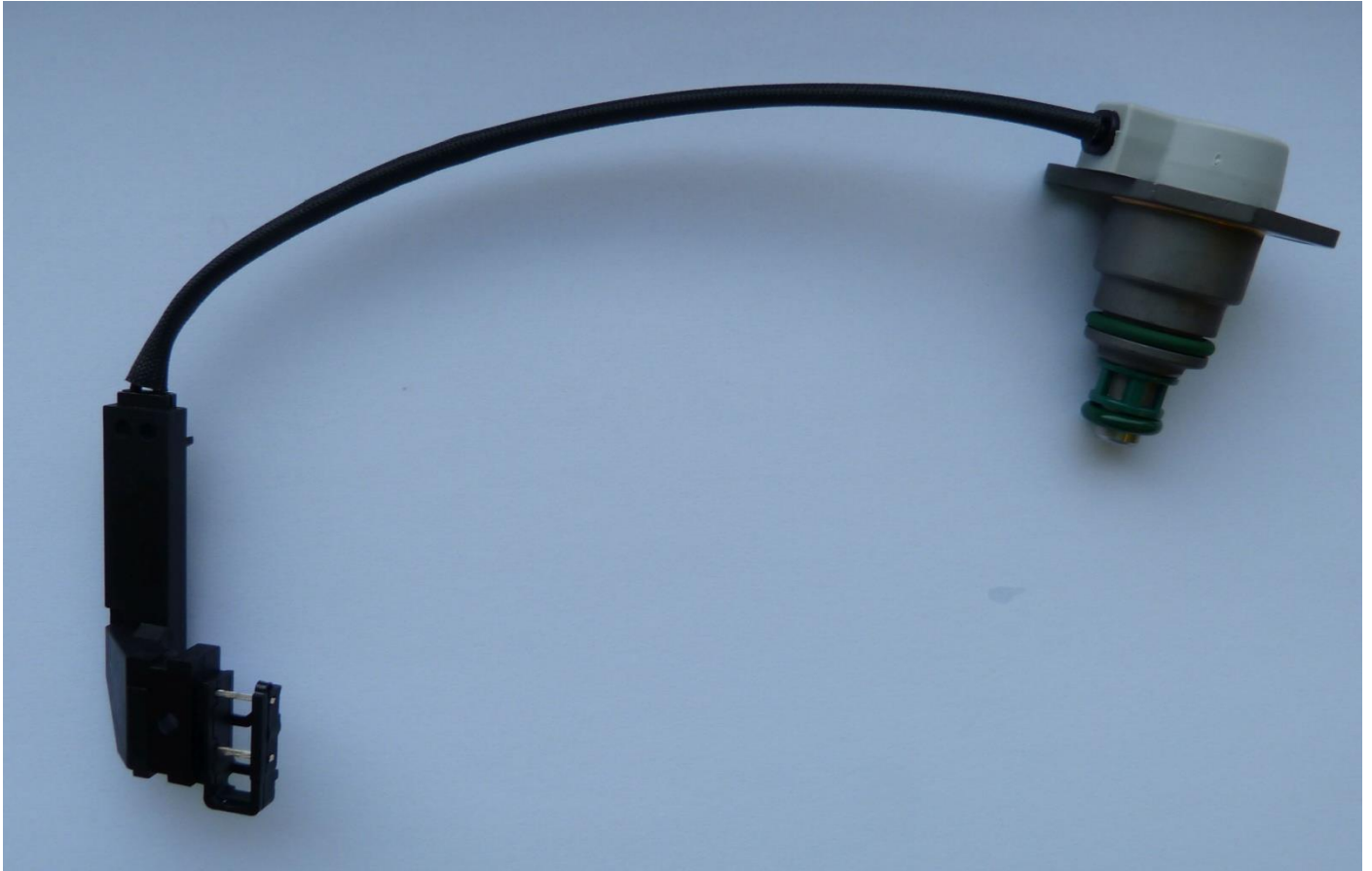
significant damage on cable isolation of DMV12  
→ not acceptable



acceptable damages



**DMV10**

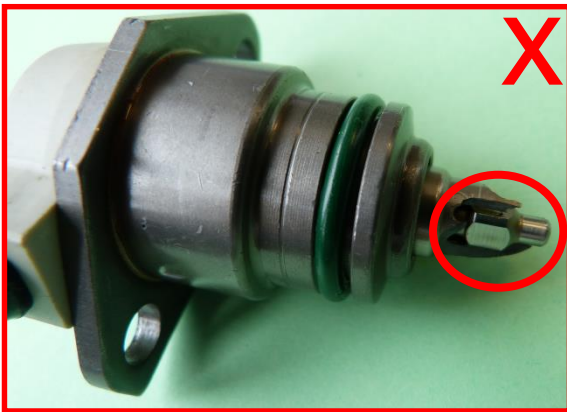


Criteria: ·

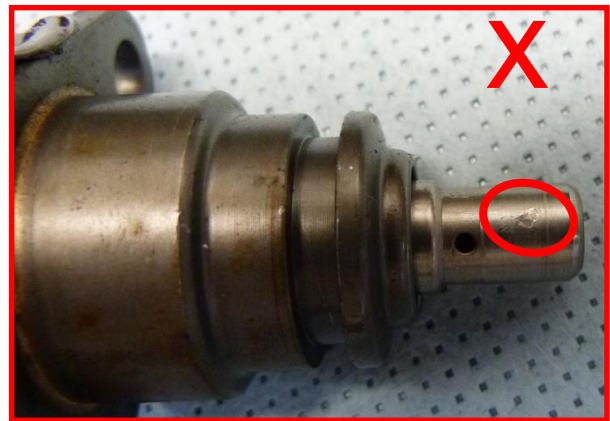
- mechanical damage
- not identifiable

red frame → not acceptable  
green frame → acceptable

**Criterion: mechanical damage**



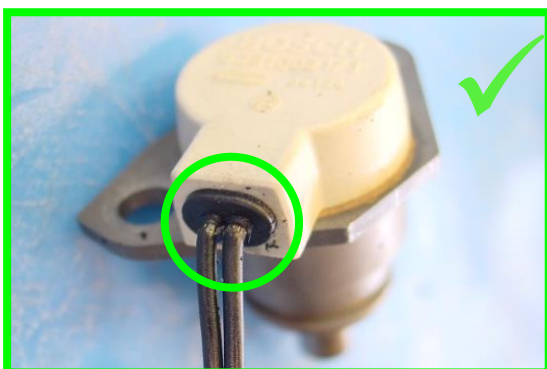
heavy damage and disruption on valve unit  
→ not acceptable



slight damages on surface of valve unit  
→ not acceptable



damages on front end of valve unit  
→ not acceptable



cable / isolation damaged  
→ acceptable



cable / isolation damaged → acceptable  
corrosion on flange → acceptable